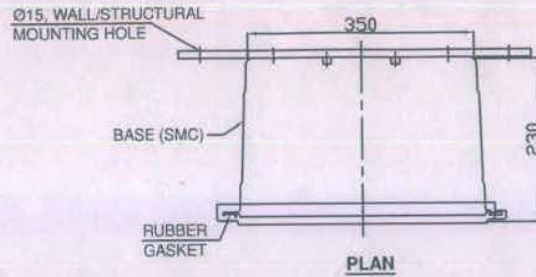
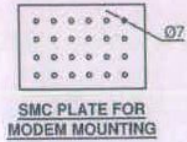
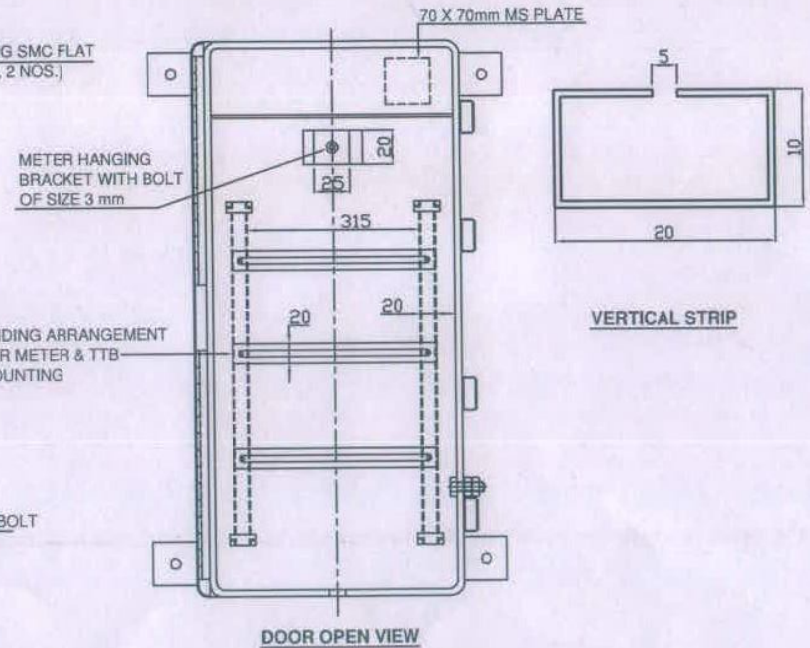
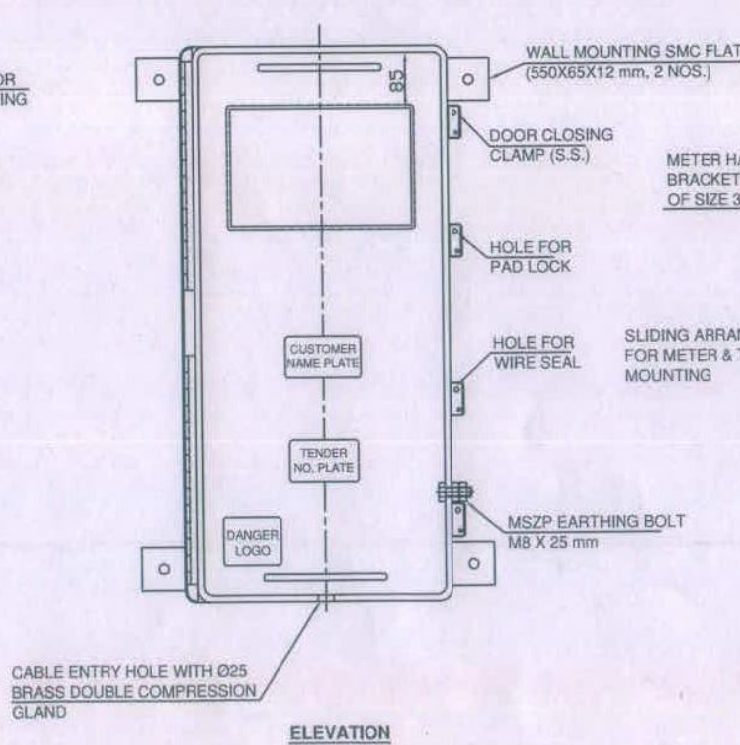
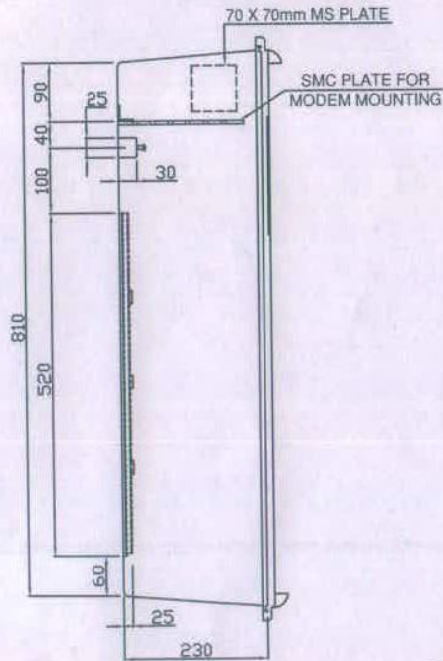


TENDER NO. PGVCL/RJT/PROC/HT SMC Meter Box/770



NOTES:

1. MADE OUT OF (THERMOSETTING PLASTIC) SHEET MOULDING COMPOUND BY THE PROCESS OF HOT PRESS COMPRESSION MOULDING, CONFIRMING TO IS: 13410.
2. SMC BASE OR DOOR SHALL NOT SOFTEN OR BEND ON HEATING.
3. DOOR FITTED TO BASE BY STRIP HINGES.
4. TRANSPARENT COVER OF VIEWING WINDOW TOUGHENED TRIPLEX GLASS FITTED FROM INSIDE OF DOOR.
5. DIMENSIONS:
INSIDE :- H = 810mm, W = 350mm, D = 230mm,
6. COLOUR:- OFF WHITE



THIS IS SCHEMATIC DRAWING

TITLE:	SCALE:	ALL DIMENSIONS ARE IN mm.	APPROVED BY:
3 PHASE HT AMR SMC METER BOX	NTS		
PASCHIM GUJARAT VIJ COMPANY LIMITED			
DRG NO.: PGVCL/HTSMC			


 Executive Engineer (Comm.)
 PGVCL Corporate Office
 Rajkot.