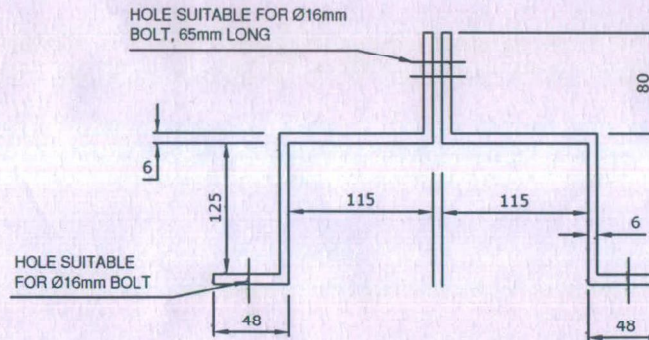
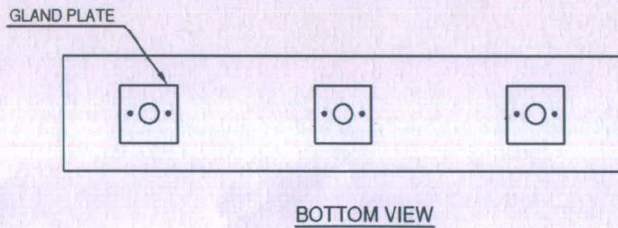
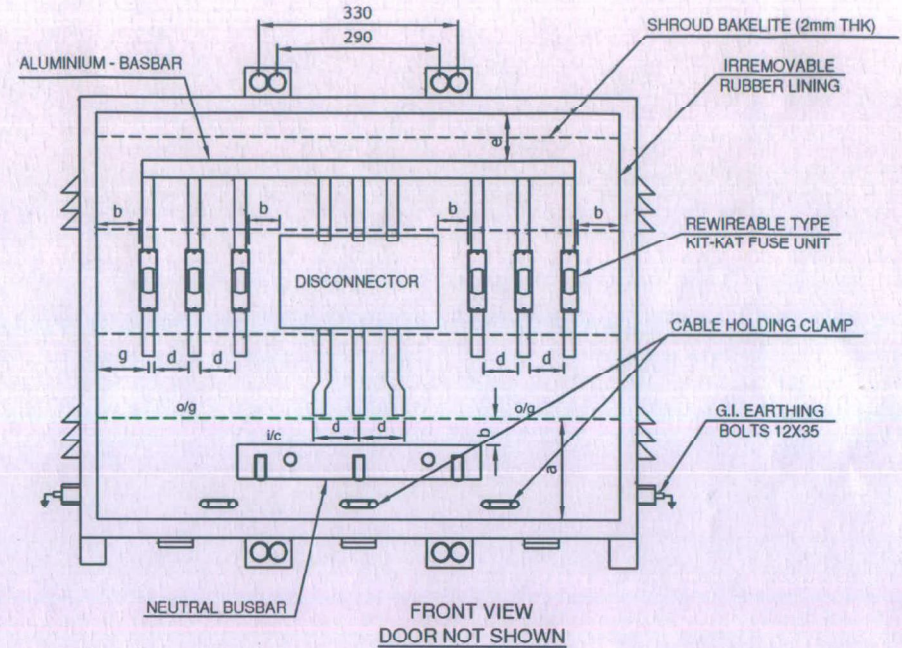
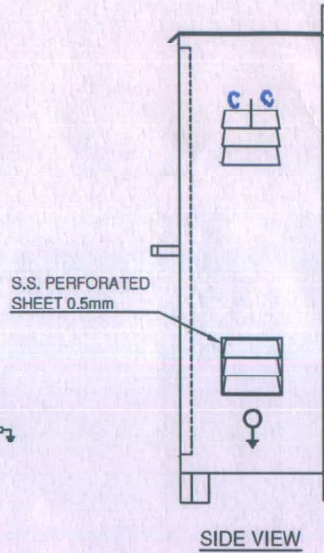
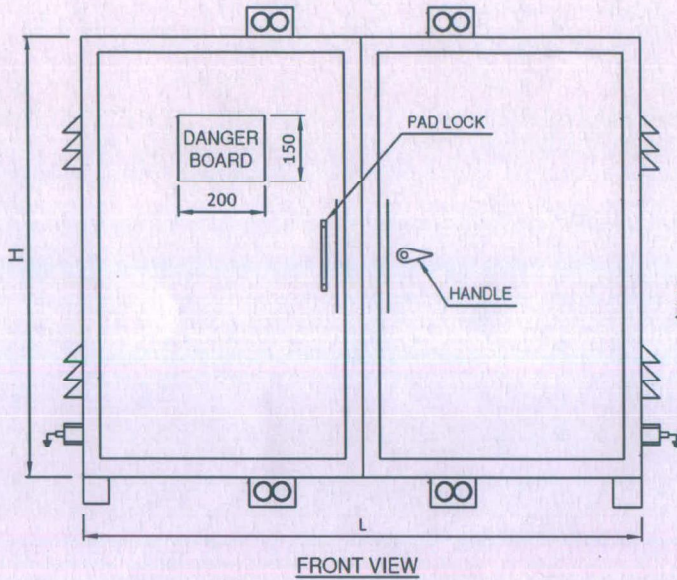


TENDER NO.PGVCL/RJT/PROC/LT DB/761



**Chief Engineer (Project)**  
**PGVCL, Corporate Office,**  
**RAJKOT.**

**NOTES:**  
 ENCLOSURE SHEET THICKNESS NOT LESS THAN 1.6mm SUITABLE INSULATING SHROUDS SHALL BE PROVIDED ALL BUSBAR COVERED WITH HEAT SHRINKABLE SLEEVE ENCLOSURE IS DUST AND VERMIN PROOF SUITABLE FOR IP-44 GENERAL TOLERANCE ON DIMENSION (±)3%.

This is Schematic Drawing

<b>TITLE:</b> GENERAL ARRANGEMENT DRAWING FOR 25 KVA / 63 KVA/ 100 KVA DISTRIBUTION BOX WITH DISCONNECTOR SWITCH AND KIT KAT FUSE	<b>SCALE:</b> NTS All Dimensions Are in MM.	<b>APPROVED BY:</b>
<b>PASCHIM GUJARAT VIJ COMPANY LIMITED</b>		
<b>DRG NO.: 1 - (LTDB)</b>		

RATING	ALU-BUS BAR SIZE in mm		DIMENSIONS IN mm			CURRENT DENSITY
	MAIN BUS	NEUTRAL BUS	L	B	H	
25KVA	25 X 3	12 X 3	975	275	825	NOT MORE THEN 1.4 A/mm <sup>2</sup>
63KVA	25 X 6	12 X 6	975	275	825	
100KVA	25 X 6	12 X 6	1025	275	825	

MIN. CLEARANCES
a = 325mm
b = 75mm
c = 35mm
d = 75mm
e = 75mm
g ≥ b