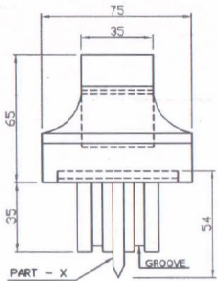
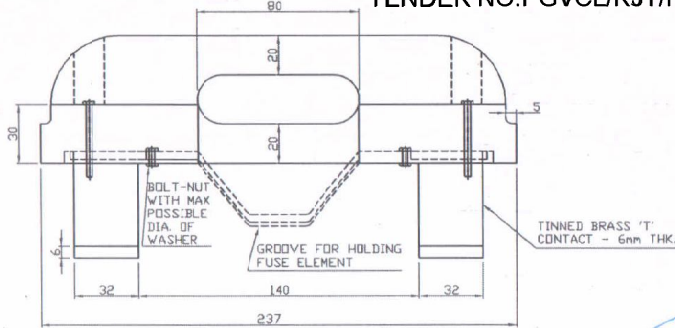


TENDER NO.PGVCL/RJT/PROC/LT DB/761



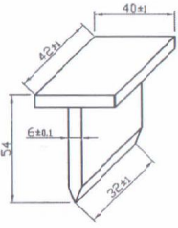
SIDE VIEW



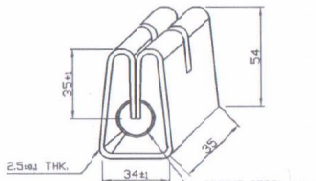
TINNED BRASS 'T' CONTACT - 6mm THK.

BOLT-NUT WITH MAX POSSIBLE DIA. OF WASHER

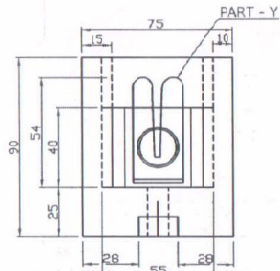
GROOVE FOR HOLDING FUSE ELEMENT



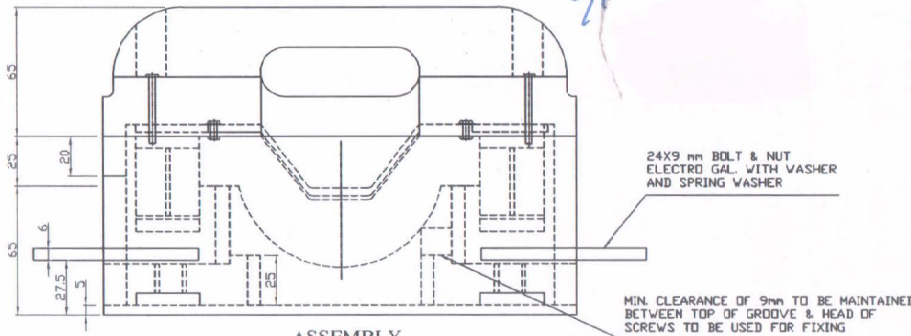
PART - X



PART - Y



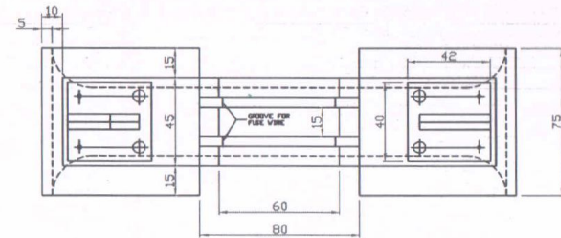
SIDE VIEW



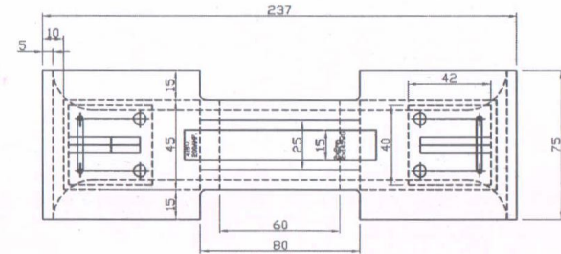
ASSEMBLY

24X9 mm BOLT & NUT ELECTRO GAL. WITH WASHER AND SPRING WASHER

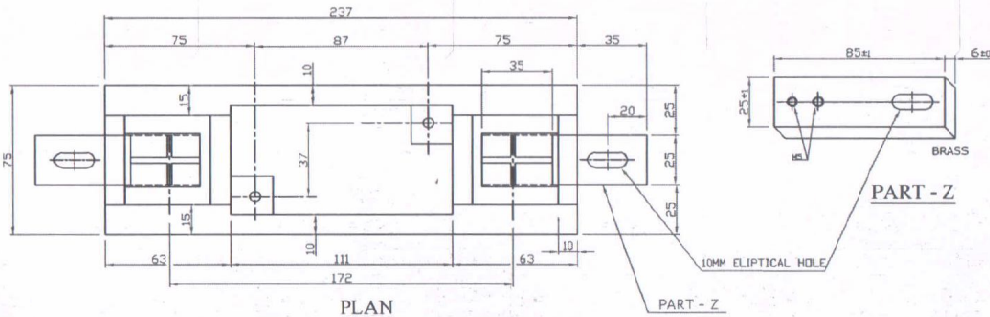
MIN. CLEARANCE OF 9mm TO BE MAINTAINED BETWEEN TOP OF GROOVE & HEAD OF SCREWS TO BE USED FOR FIXING



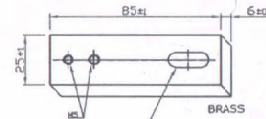
BOTTOM VIEW OF CARRIER



TOP VIEW OF CARRIER



PLAN



PART - Z

10MM ELLIPTICAL HOLE

PART - Z

Chief Engineer (Project)
PGVCL, Corporate Office,
RAJKOT.

NOTE:

1. WORD 'PGVCL' AND TRADE MARK OF SUPPLIER SHALL BE EMBOSSED BOTH ON FUSE CARRIER AND BASE
2. GENERAL TOLERANCE $\pm 5\%$ ON LENGTH, WIDTH AND HEIGHT OF THE BODY.
3. CENTRE DISTANCE BETWEEN HOLES OF METAL PARTS
UP TO 50mm - ± 1 mm
ABOVE 50mm - ± 2 mm
4. WALL THICKNESS
UP TO 10mm ± 1 mm.
ABOVE 10mm ± 1.5 mm.
5. TOLERANCE $\pm 5\%$ IN CERAMIC PARTS
6. ALL CURRENT CARRYING PARTS TINNED PLATED WITH TOLERANCE AS PER IS - 2086/93 WITH LATEST AMMENDMENT.
7. ALL DIMENSIONS ARE IN mm

PASCHIM GUJARAT VIJ COMPANY LTD.
RAJKOT

GENERAL ARRANGEMENT & COMPONENTS
DRG. FOR 200Amp, 415Volts KIT-KAT FUSE

DRG. NO.: PGVCL / FUSE / 200A / 01