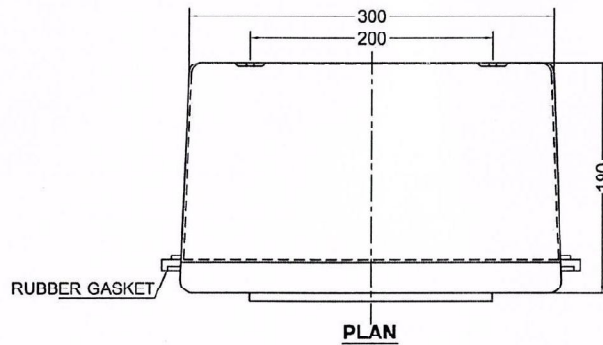
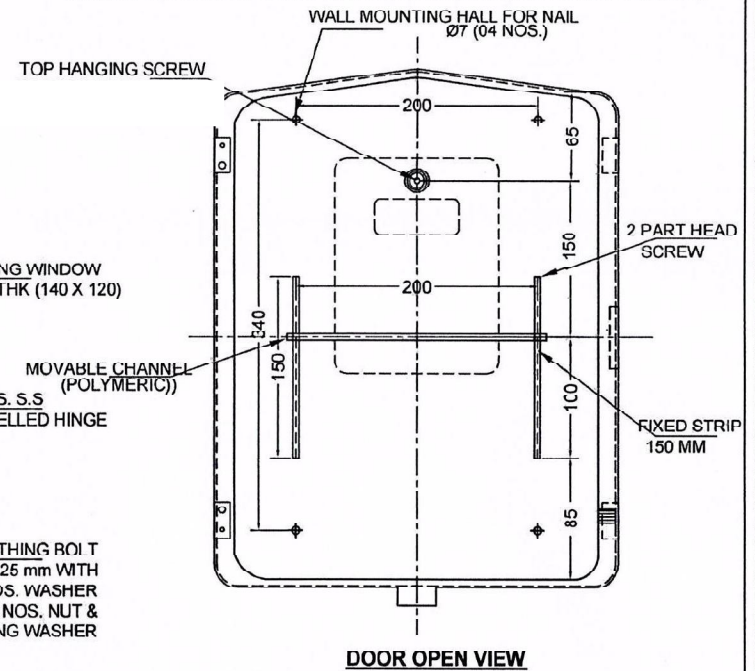
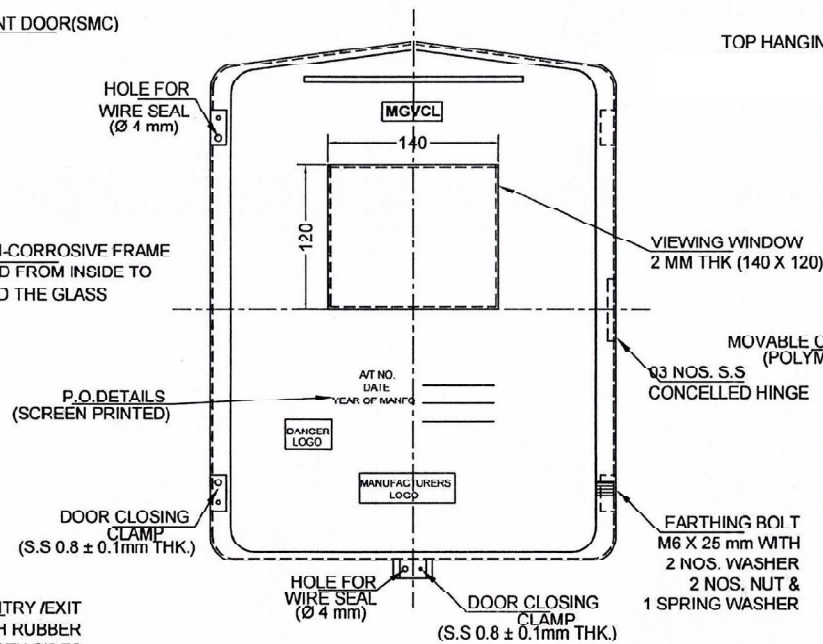
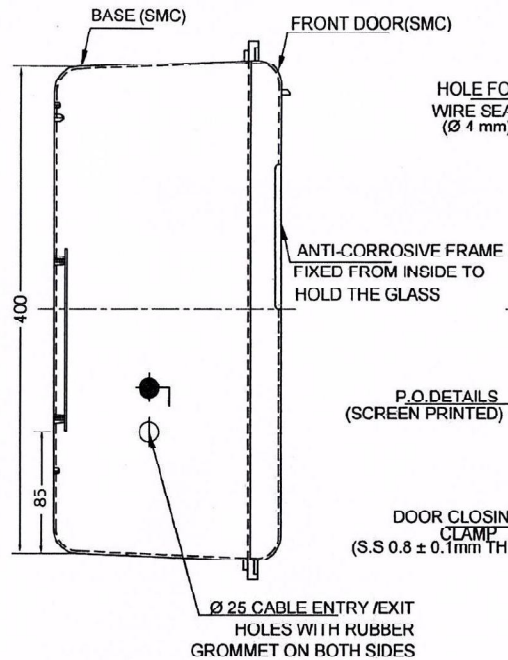


TENDER No. PGVCL/PROC/SMC Box for 1Ph & 3Ph Meter/846



**NOTES:**

1. MADE OUT OF (THERMOSETTING PLASTIC) SHEET, MOLDING COMPOUND BY THE PROCESS OF HOT PRESS COMPRESSION MOLDING, CONFIRMING TO IS:13410.
2. SMC BASE OR DOOR SHALL NOT SOFTEN OR BEND ON HEATING.
3. DOOR FITTED TO BASE BY S.S CONCEALED HINGES WITH DOOR CLOSING CLAMP.
4. DIMENSIONS:  
INSIDE :- H=400mm, W=300mm, D=190mm,  
THICKNESS OF SMC=2mm
5. COLOUR :- OFF WHITE



*A. Patel*  
**Chief Engineer (Material)**  
**PGVCL, Corporate Office**  
**Rajkot.**

<b>TITLE:</b> 3-PHASE SMC METER BOX FOR WHOLE CURRENT METER	<b>SCALE:</b> NTS 	all dimensions are in mm	<b>APPROVED BY:</b>
<b>NAME OF DISCOM: PGVCL</b>			
<b>DRG NO:- DISCOM / SMC BOX /</b>			