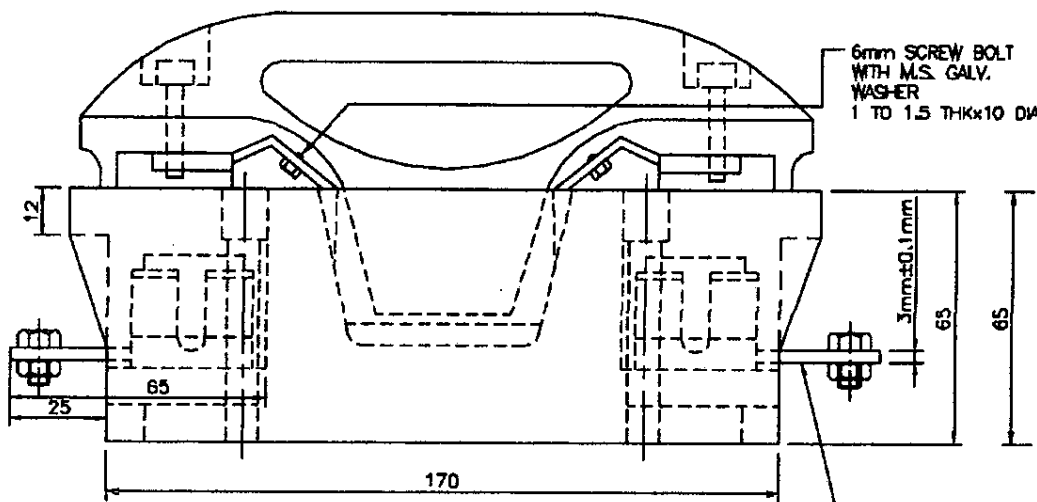
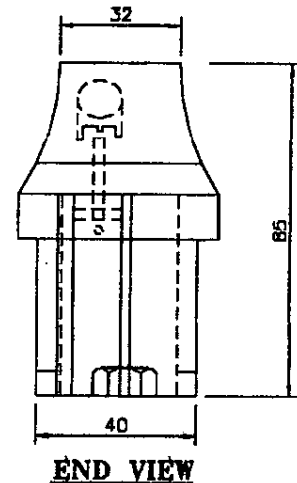
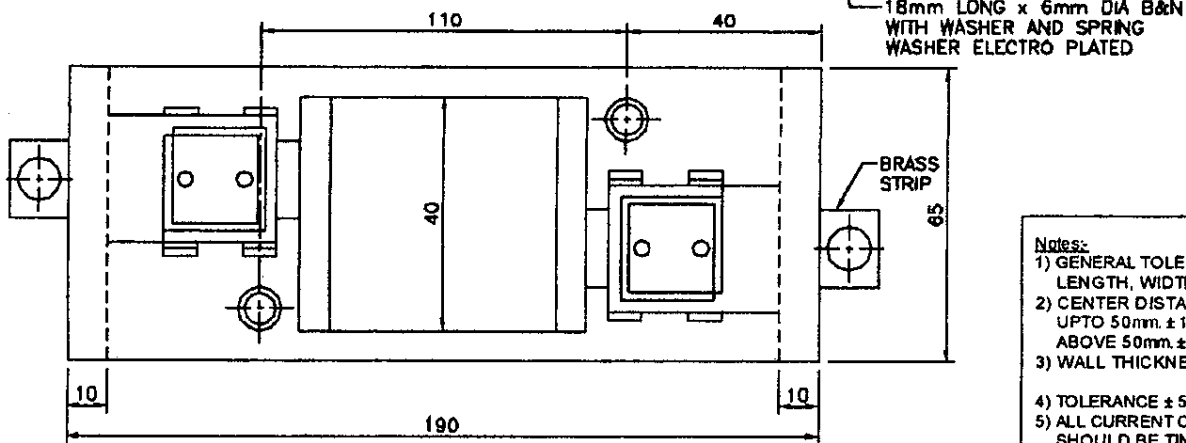
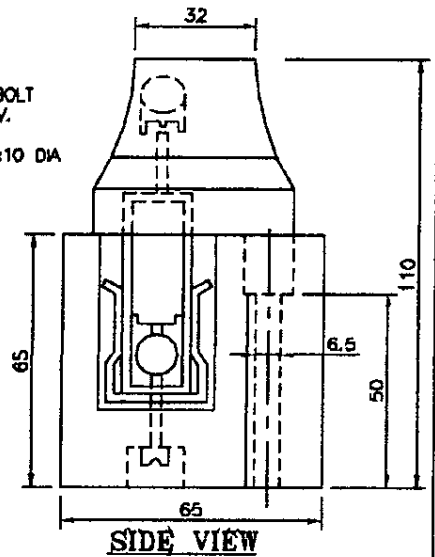


CARRIER



ASSEMBLY



PLAN (BASE)

Notes:

- 1) GENERAL TOLERANCE $\pm 5\%$ ON LENGTH, WIDTH AND HEIGHT.
- 2) CENTER DISTANCE BETWEEN HOLES UPTO 50mm. ± 1 mm. ABOVE 50mm. ± 2 mm.
- 3) WALL THICKNESS UPTO 10mm. ± 1 mm. ABOVE 10mm. ± 1.5 mm.
- 4) TOLERANCE $\pm 5\%$ IN CERAMIC BODY.
- 5) ALL CURRENT CARRYING PARTS SHOULD BE TINNED PLATED.
- 6) ALL DIMENSIONS ARE IN mm.
- 7) WORD PGVCL BRAND SHALL BE EMBOSSED BOTH ON FUSE CARRIER & BASE (PGV should be replaced with respective DISCOM name)

48/2021
 S/C Chief Engineer (Project)
 PGVCL, Corp. Office
 Rajkot

DISCOM Name: PGVCL
Drawing Title: 100 Amp KitKat Fuse, 415 V
Drawing No.: PGVCL/FUSE/02/100 Amp